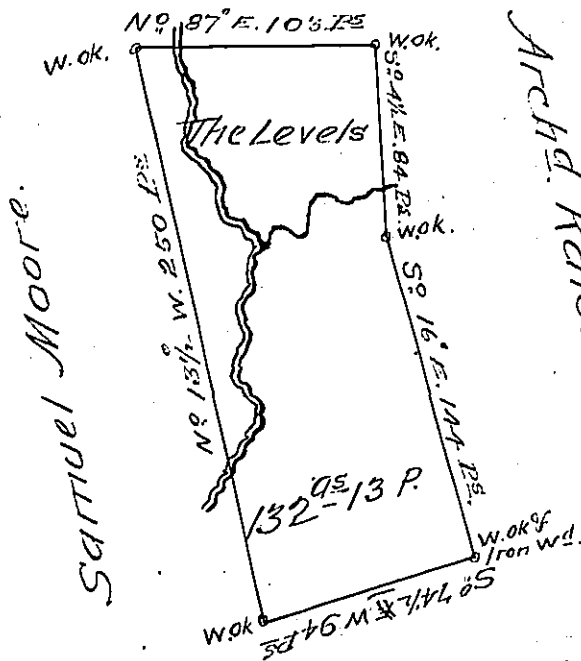




Swearingen.



James McLughlin

A Draught of a Survey called "The Levels" situate on the waters of Kings Creek in Washington County containg 132 As. 13 Ps and the usual allowance for Roads &c executed June the 1st 1789 in Pursuance of a Warrant granted to Baltzer Spangler for 100 Acs dated May y^e 4th 1789

Dr. Lukens Esq. S. Genl. }
 Presley Nevill } D. SE
 Matt^w Ritchie }
 Recd a doc on 9/6 f 6

IN TESTIMONY that the above is a copy of the original remaining on file in the Department of Internal Affairs of Pennsylvania, made conformably to an Act of Assembly approved the 16th day of February, 1833, I have hereunto set my Hand and caused the Seal of said Department to be affixed at Harrisburg, this thirteenth day of November 1906.

Leach P. Brown
 Secretary of Internal Affairs.